



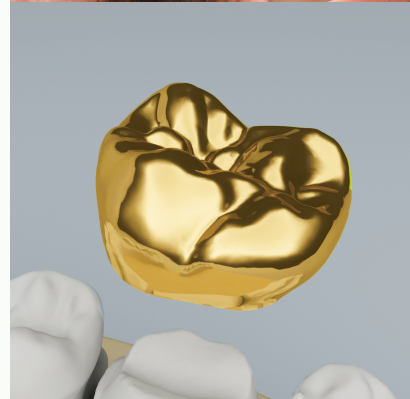
Every dental patient is different.

Discuss your dental needs and healthcare goals with your dental professional to determine the very best solution for your unique situation!



Literally the gold standard of dental restorations. Virtually indestructible. Every other restoration is compared with gold.

When longevity matters, choose gold.



Cast Metal Crowns (Gold or Silver)

Unmatched strength and durability designed for many years of reliable service



Information provided courtesy of Stomadent Full Service Dental Laboratory.
www.stomadentlab.com

Benefits of Cast Metal Crowns

- ✓ Restores function to broken teeth or strengthens teeth with excessively large fillings.
- ✓ Made from a high noble alloy of metals that contains platinum, palladium, and 40% or more gold.
- ✓ Withstands wear; not prone to chipping or breakage.
- ✓ Its strength makes it suitable for bridges.
- ✓ Literally the “gold standard” of dentistry – all other restorations are compared to the properties and wear of gold.
- ✓ Best used in posterior locations where longevity is of utmost importance; average lifespan is 25-30 years of service depending on how the patient cares for it.



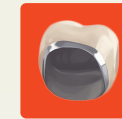
Considerations

- ✓ Gold or silver in color, depending on the specific metal content.
- ✓ More commonly used in the back of the mouth where it is less noticeable.
- ✓ Good for patients who grind their teeth or who have a hard bite.

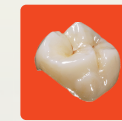
You may be a candidate for other tooth replacement alternatives:



Zirconia crowns



Porcelain fused-to-metal (PFM) crowns.



IPS e. Max crowns.

