



PATIENT  
INFORMATION

## Every dental patient is different.

Discuss your dental needs and healthcare goals with your dental professional to determine the very best solution for your unique situation!

Valplast partial dentures are made to blend seamlessly with your surrounding natural teeth.

**People will never know  
which of your teeth are  
not your own!**



## Valplast Partial Denture

A comfortable, flexible, and economic solution for missing teeth.



Information provided courtesy of Stomadent  
Full Service Dental Laboratory.  
[www.stomadentlab.com](http://www.stomadentlab.com)

## Benefits of Valplast Partial

- ✓ An economical way to replace missing natural teeth.
- ✓ Much closer to a natural-feeling appliance than a traditional metal partial.
- ✓ Less bulky and lighter weight than a metal partial; has more flexibility and movement.
- ✓ Clasps are kind to your teeth and are made of tissue-colored flexible material to make them appear less visible.
- ✓ Teeth don't have to be altered in order to wear a Valplast partial.
- ✓ An excellent option when saving for a more permanent, non-removable solution in the future such as a bridge or dental implants.



## Considerations



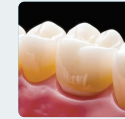
- ✓ Removable appliance; Must be removed and cleaned after eating and before bedtime.
- ✓ It may cover your palate, altering your taste and temperature sensation.
- ✓ Average lifespan 5-10 years, depending on how you care for it.



You may be a candidate for other prosthetic alternatives:



**Cast Metal Partial Denture** – a more rigid removable partial but with a very precise fit.



**Dental Bridgework** – fills in the missing teeth with crowns and restores the surrounding natural teeth simultaneously; not removable; care for it the same as your natural teeth.



**Dental Implants with Crowns** – provides the most natural comfort; looks and functions like your own natural teeth in every way.